

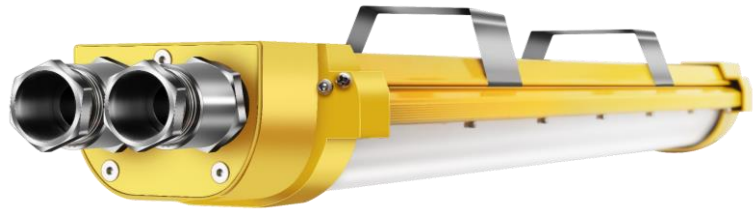
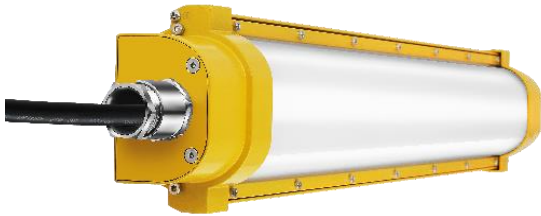


SPECIAL USE

LED Explosion proof light

II 2G Ex eb mb IIC T4 Gb

II 2D Ex tb IIIC T(95) Db



**Zone 1 Zone 2
Zone 21 Zone 22**

ATEX
Certified



RoHS
compliant

CODE	EX020SE2E-BG	EX040SE2E-BG	EX060SE4E-BG	EX080SE4E-BG
CCT	4000K			
Working temperature	-10°C -- +45°C			
CRI	Ra≥80			
Power	20W	40W	60W	80W
Weight, kg	2.6	2.6	4.0	4.1
Size LxWxH, mm	735x115x63	735x115x63	1335x115x63	1335x115x63
Power factor	0.95			
Light efficiency	120 lm/W			
Luminous Flux	2400 lm	4800 lm	7200 lm	9600 lm
IP grade / IK	IP65 / IK08			
Beam angle	Frosted (120 °)			
Dimmable	PWM / DALI / 0-1~10V			
Lifespan	L90B10 50000 h			
Driver / LEDs	Explosion Proof Driver ; Bridgelux			
Materials	Pure Aluminum A6063 / PC			
Installation	suspended / surface mounted / adjustable			
Exemplary applications	Applied to oil fields, oil refineries, offshore oil platform, power plants, gas station, oil tanks, wharf, tunnel, pumping station, substation, the military base, etc.			

