

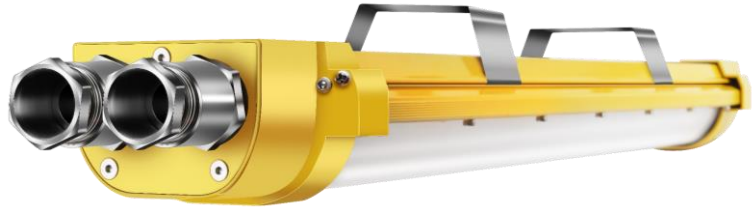
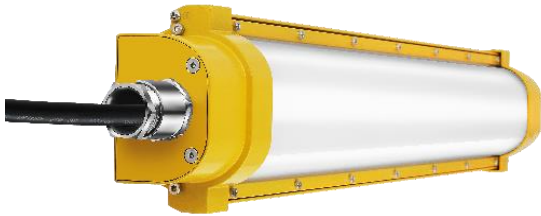


SPECIAL USE

LED Explosion proof light

II 2G Ex eb mb IIC T4 Gb

II 2D Ex tb IIIC T(95) Db



**Zone 1 Zone 2
Zone 21 Zone 22**

ATEX
Certified



RoHS
compliant

CODE	EX020SE2E-BG	EX040SE2E-BG	EX060SE4E-BG	EX080SE4E-BG
CCT	4000K			
Working temperature	-10°C -- +45°C			
CRI	Ra≥80			
Power	20W	40W	60W	80W
Weight, kg	2.6	2.6	4.0	4.1
Size LxWxH, mm	735x115x63	735x115x63	1335x115x63	1335x115x63
Power factor	0.95			
Light efficiency	120 lm/W			
Luminous Flux	2400 lm	4800 lm	7200 lm	9600 lm
IP grade / IK	IP65 / IK08			
Beam angle	Frosted (120 °)			
Dimmable	PWM / DALI / 0-1~10V			
Lifespan	L90B10 50000 h			
Driver / LEDs	Explosion Proof Driver ; Bridgelux			
Materials	Pure Aluminum A6063 / PC			
Installation	suspended / surface mounted / adjustable			
Exemplary applications	Applied to oil fields, oil refineries, offshore oil platform, power plants, gas station, oil tanks, wharf, tunnel, pumping station, substation, the military base, etc.			





SPECIAL USE
EXTREME WORKING CONDITIONS UP TO 80 °C
NINJA HT SERIES



CODE	NINJA-HT-20	NINJA-HT-40	NINJA-HT-60	NINJA-HT-80
CCT	4000K			
Working temperature	-20°C -- +80°C			
CRI	Ra≥70/Ra≥80			
Power	20W	40W	60W	80W
Weight, kg	1.5	2.7	3.9	5.0
Size LxWxH, mm	310x100x100	610x100x100	910x100x100	1210x100x100
Power factor	0.97			
Light efficiency	170-180 lm/W			
Luminous Flux	3600 lm	7200 lm	10800 lm	14400 lm
IP grade / IK	IP66 / IK10			
Beam angle	Transparent / Frosted / 60 °/ 90 °			
Dimmable	0~10Vdc, DALI			
Lifespan	L90B10 70000 h			
Driver ENEC / LEDs	own construction ; world-leading supplier			
Materials	aluminium, tempered glass / PC			
Installation	suspended / surface mounted / adjustable			
Exemplary applications	Prison cells, police detention centers, correctional facilities, underground passages and others places exposed to destruction or theft.			

