



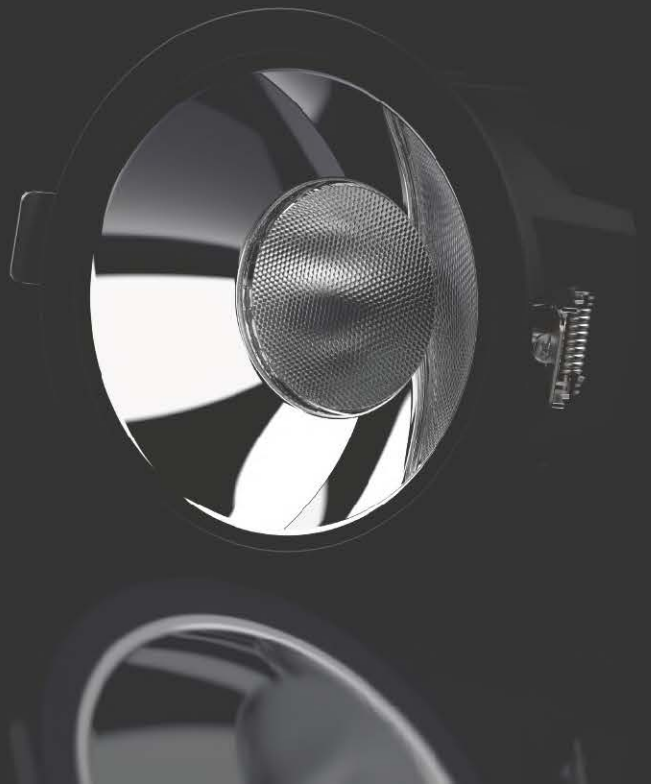
# LEDestó

premium lighting

Catalogue Nr.2

*Quality Within Your Reach*

[www.ledesta.eu](http://www.ledesta.eu)



# CONTENS



# LEDestá

premium lighting



DOWNLIGHT

**05- 08**

HBL Series  
(With reflector)



DOWNLIGHT

**09- 12**

HBL Series  
(With Lens)



DOWNLIGHT

**13- 16**

MBL Series



DOWNLIGHT

**17- 20**

MBT Series  
(With reflector)



DOWNLIGHT

**21- 24**

MBT Series  
(With lens)



DOWNLIGHT

**25- 28**

STM Series



DOWNLIGHT

**29- 34**

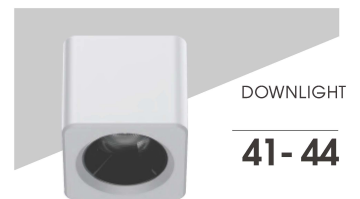
DBL Series  
(COB Type)



DOWNLIGHT

**35- 40**

DBL Series  
(SMD Type)



DOWNLIGHT

**41- 44**

DBM Series  
(COB Type)



DOWNLIGHT

**45- 48**

DBL Series  
(SMD Type)





# DOWNLIGHT

HBL Series

(Reflector)



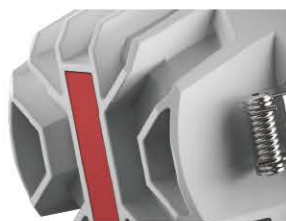


Product Breakdown Physical Diagram





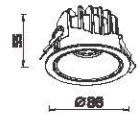
More details





**PARAMETERS**

HBL0010



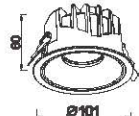
Cutout:  $\Phi$  75

Model	Rated Power	Chip	CCT	CRI	Material	Dimension	Cutout	Input Voltage	Angle(Lens)
HBL0010	7-10W	CREE/Bridgelux	3000K/4000K/6000K	>90	Aluminum	$\phi$ 86*55mm	$\phi$ 75mm	100-240V/50-60Hz	50°



**PARAMETERS**

HBL0011



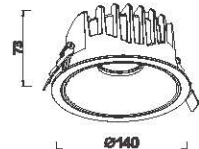
Cutout:  $\Phi$  90

Model	Rated Power	Chip	CCT	CRI	Material	Dimension	Cutout	Input Voltage	Angle(Lens)
HBL0011	15-18W	CREE/Bridgelux	3000K/4000K/6000K	>90	Aluminum	$\phi$ 101*60mm	$\phi$ 90mm	100-240V/50-60Hz	24°/38°/55°



**PARAMETERS**

HBL0012



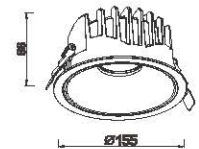
Cutout:  $\Phi$  125

Model	Rated Power	Chip	CCT	CRI	Material	Dimension	Cutout	Input Voltage	Angle(Lens)
HBL0012	25-30W	CREE/Bridgelux	3000K/4000K/6000K	>90	Aluminum	$\phi$ 140*73mm	$\phi$ 125mm	100-240V/50-60Hz	24°/38°/55°



**PARAMETERS**

HBL0013



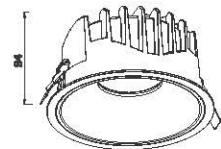
Cutout:  $\Phi$  140

Model	Rated Power	Chip	CCT	CRI	Material	Dimension	Cutout	Input Voltage	Angle(Lens)
HBL0013	30-40W	CREE/Bridgelux	3000K/4000K/6000K	>90	Aluminum	$\phi$ 155*86mm	$\phi$ 140mm	100-240V/50-60Hz	24°/38°/55°



**PARAMETERS**

HBL0014



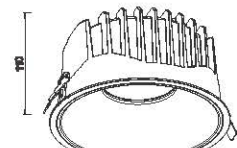
Cutout:  $\Phi$  165

Model	Rated Power	Chip	CCT	CRI	Material	Dimension	Cutout	Input Voltage	Angle(Lens)
HBL0014	35-40W	CREE/Bridgelux	3000K/4000K/6000K	>90	Aluminum	$\phi$ 180*93mm	$\phi$ 165mm	100-240V/50-60Hz	24°/38°/55°



**PARAMETERS**

HBL0015



Cutout:  $\Phi$  200

Model	Rated Power	Chip	CCT	CRI	Material	Dimension	Cutout	Input Voltage	Angle(Lens)
HBL0015	50-55W	CREE/Bridgelux	3000K/4000K/6000K	>90	Aluminum	$\phi$ 214*110mm	$\phi$ 200mm	100-240V/50-60Hz	24°/38°/55°





# DOWNLIGHT

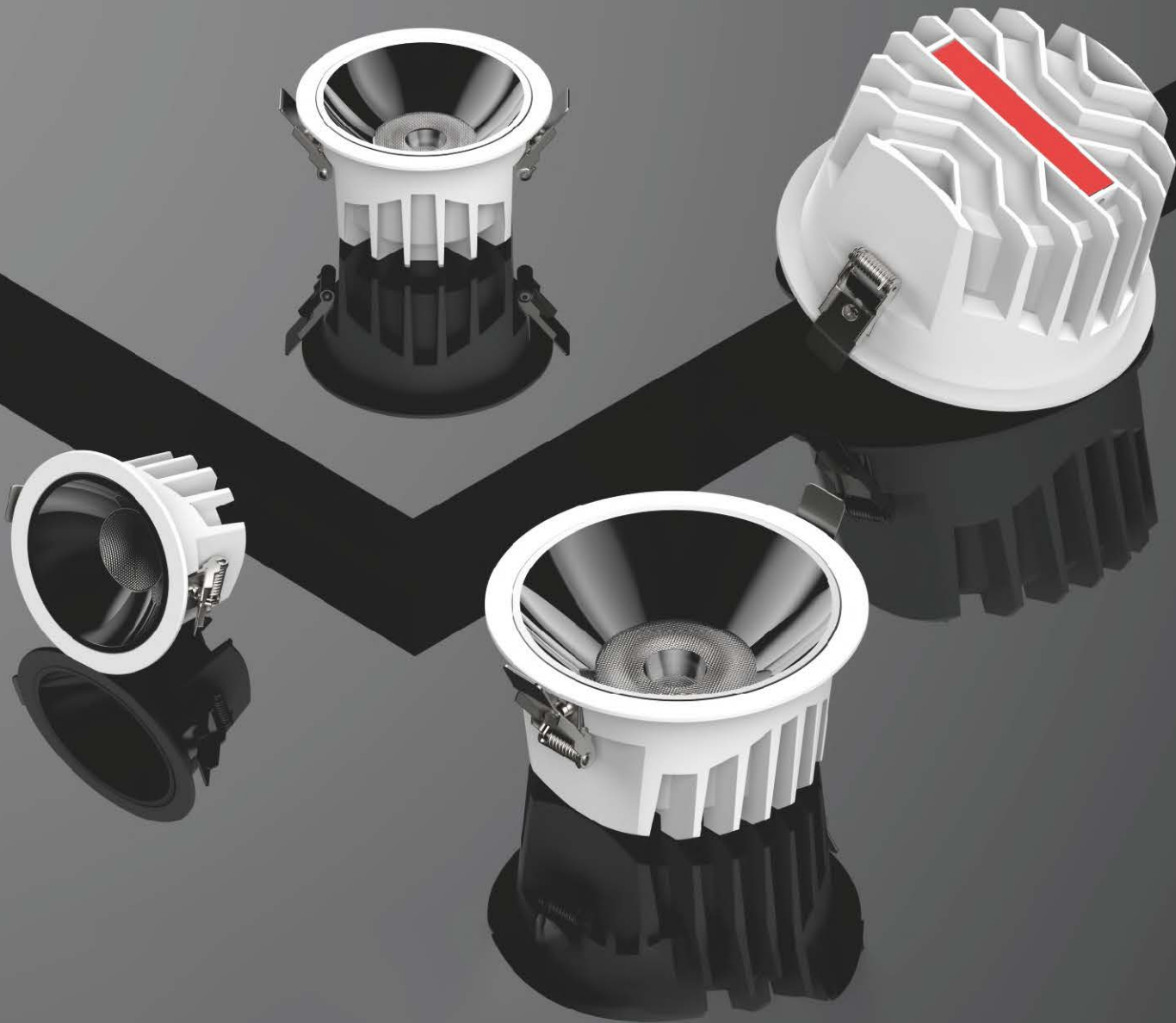
HBL Series

(Lense)

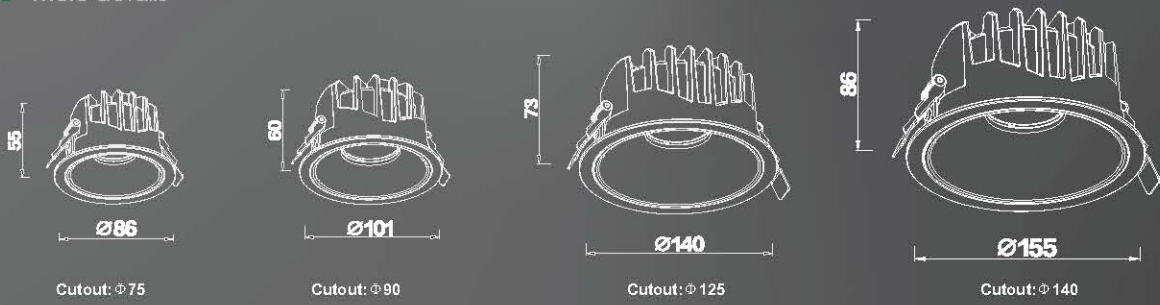


Product Breakdown Physical Diagram





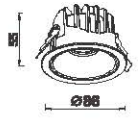
More details





## PARAMETERS

HBL0010L



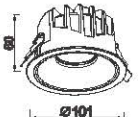
Cutout:  $\phi 75$

Model	Rated Power	Chip	CCT	CRi	Material	Dimension	Cutout	Input Voltage	Angle(Lens)
HBL0010L	7-10W	CREE/Bridgelux	3000K/4000K/6000K	>90	Aluminum	$\phi 86 \times 55 \text{mm}$	$\phi 75 \text{mm}$	100-240V/50-60Hz	24°/55°



## PARAMETERS

HBL0011L



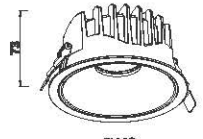
Cutout:  $\phi 90$

Model	Rated Power	Chip	CCT	CRi	Material	Dimension	Cutout	Input Voltage	Angle(Lens)
HBL0011L	15-18W	CREE/Bridgelux	3000K/4000K/6000K	>90	Aluminum	$\phi 101 \times 60 \text{mm}$	$\phi 90 \text{mm}$	100-240V/50-60Hz	24°/55°



## PARAMETERS

HBL0012L



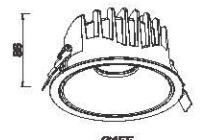
Cutout:  $\phi 125$

Model	Rated Power	Chip	CCT	CRi	Material	Dimension	Cutout	Input Voltage	Angle(Lens)
HBL0012L	25-30W	CREE/Bridgelux	3000K/4000K/6000K	>90	Aluminum	$\phi 140 \times 73 \text{mm}$	$\phi 125 \text{mm}$	100-240V/50-60Hz	24°/55°



## PARAMETERS

HBL0013L



Cutout:  $\phi 140$

Model	Rated Power	Chip	CCT	CRi	Material	Dimension	Cutout	Input Voltage	Angle(Lens)
HBL0013L	30-35W	CREE/Bridgelux	3000K/4000K/6000K	>90	Aluminum	$\phi 155 \times 86 \text{mm}$	$\phi 140 \text{mm}$	100-240V/50-60Hz	24°/55°



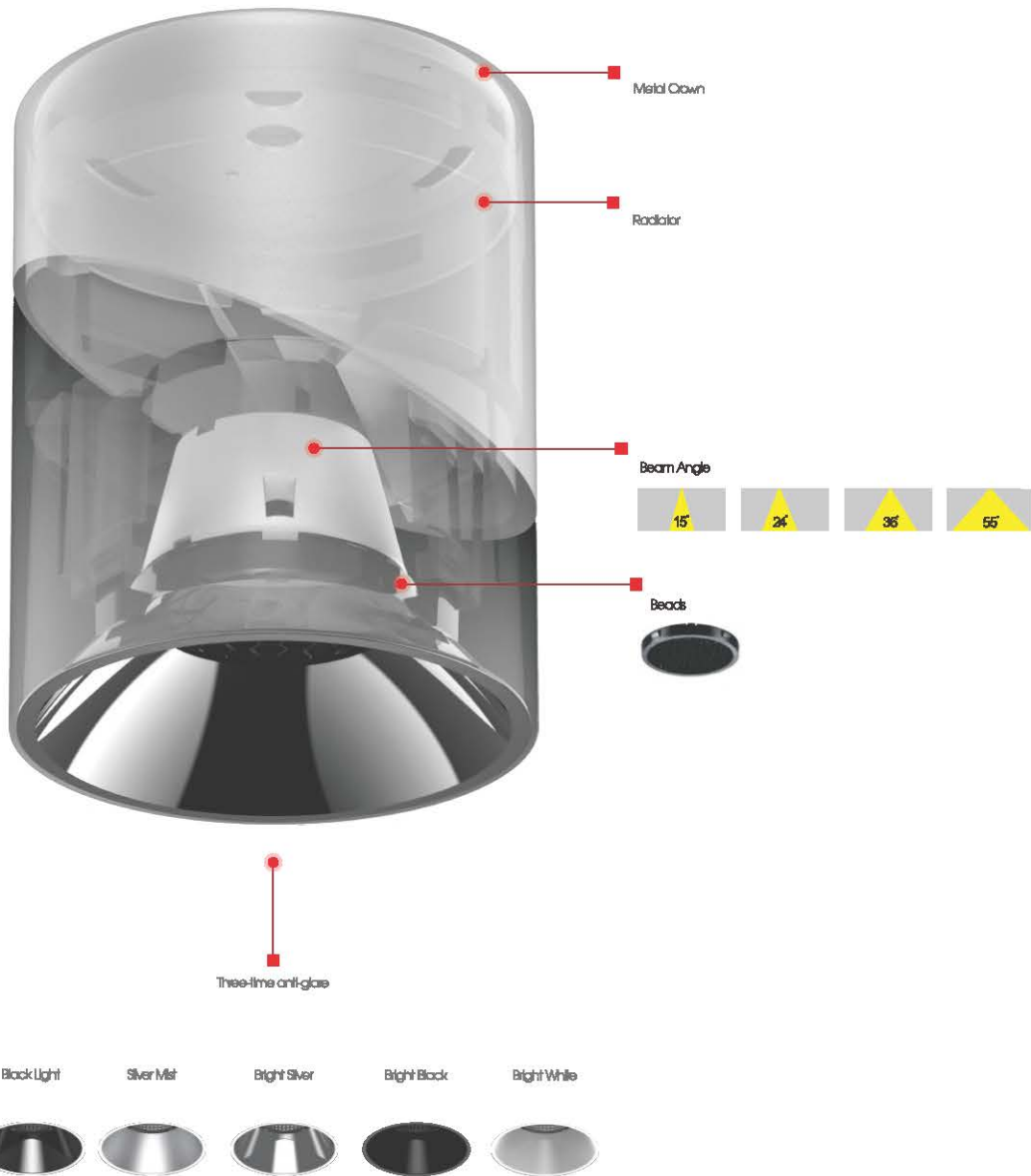




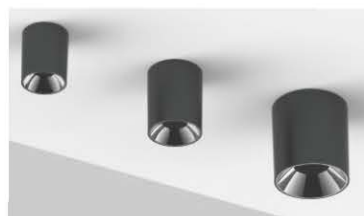
More details



Product Breakdown Physical Diagram

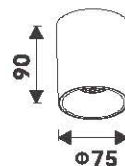


More details





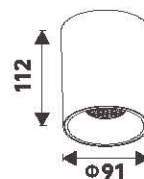
**PARAMETERS**  
MBL10W/15W



Model	Rated Power	Chip	CCT	CRI	Material	Dimension	Input Voltage	Angle(Lens)
MBL10W/15W	10W/15W	CREE/Bridgelux	3000K/4000K/6000K	>90	Aluminum	φ75*90mm	100-240V/50-60Hz	12°/24°/38°/55°



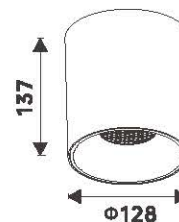
**PARAMETERS**  
MBL20W



Model	Rated Power	Chip	CCT	CRI	Material	Dimension	Input Voltage	Angle(Lens)
MBL20W	20W	CREE/Bridgelux	3000K/4000K/6000K	>90	Aluminum	φ91*112mm	100-240V/50-60Hz	12°/24°/38°/55°



**PARAMETERS**  
MBL30W



Model	Rated Power	Chip	CCT	CRI	Material	Dimension	Input Voltage	Angle(Lens)
MBL30W	30W	CREE/Bridgelux	3000K/4000K/6000K	>90	Aluminum	φ128*137mm	100-240V/50-60Hz	12°/24°/38°/55°





# DOWNLIGHT

MBT Series

(Reflector)



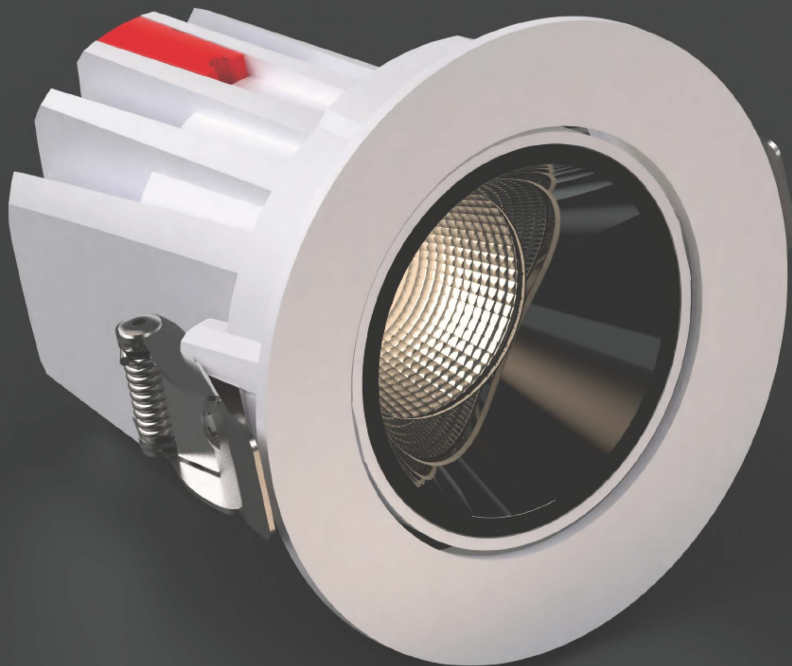
Product Breakdown Physical Diagram



# Spring breeze

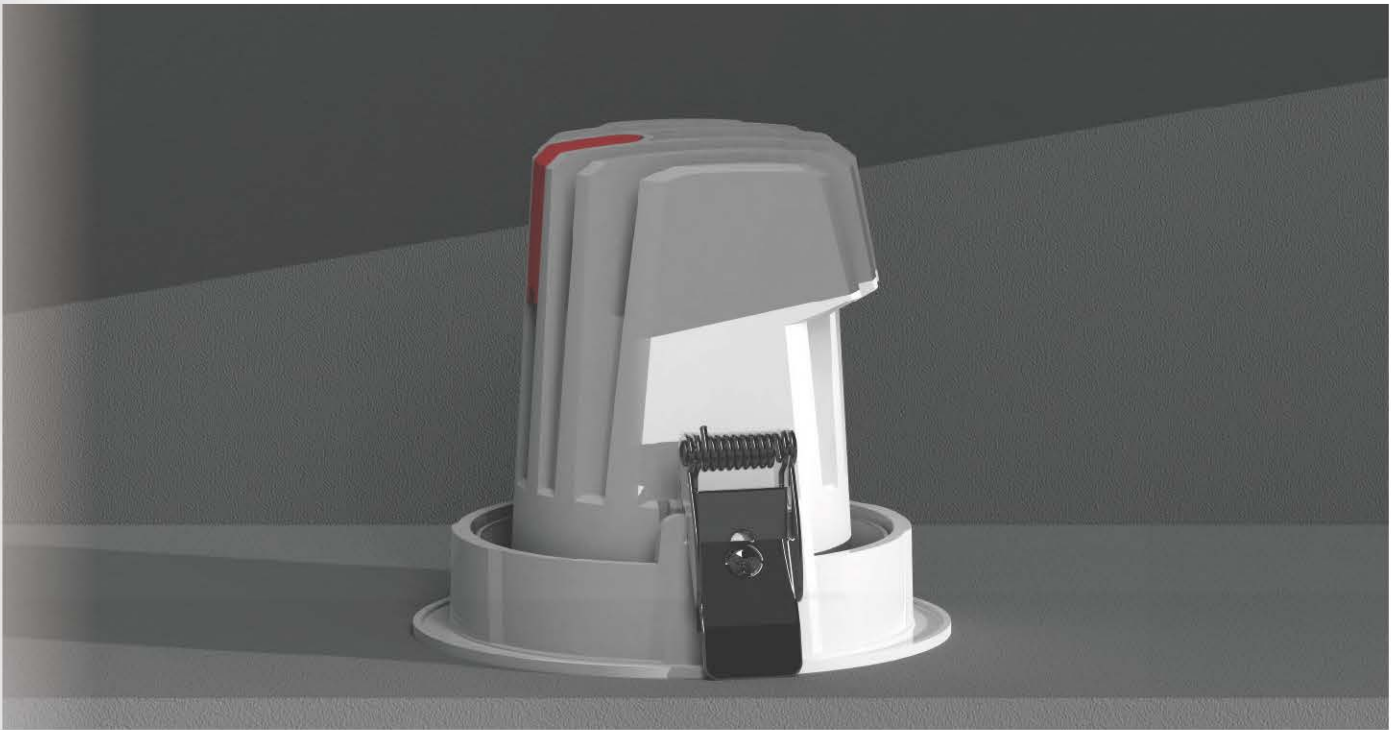
Like a spring breeze

---



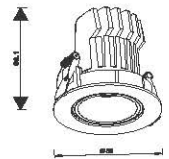
More details





## PARAMETERS

MBT0031

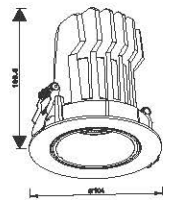


Model	Rated Power	Chip	CCT	CRI	Material	Dimension	Cutout	Input Voltage	Angle(Lens)
MBT0031	9-12W	CREE/Bridgelux	3000K/4000K/6000K	>90	Aluminum	φ85*89mm	φ75mm	100-240V/50-60Hz	15°/24°/38°



## PARAMETERS

MBT0032

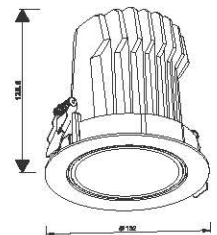


Model	Rated Power	Chip	CCT	CRI	Material	Dimension	Cutout	Input Voltage	Angle(Lens)
MBT0032	15-20W	CREE/Bridgelux	3000K/4000K/6000K	>90	Aluminum	φ104*109mm	φ95mm	100-240V/50-60Hz	15°/24°/38°



## PARAMETERS

MBT0033



Model	Rated Power	Chip	CCT	CRI	Material	Dimension	Cutout	Input Voltage	Angle(Lens)
MBT0033	25-30W	CREE/Bridgelux	3000K/4000K/6000K	>90	Aluminum	φ132*127mm	φ125mm	100-240V/50-60Hz	15°/24°/38°





# DOWNLIGHT

MBT Series  
(lens)





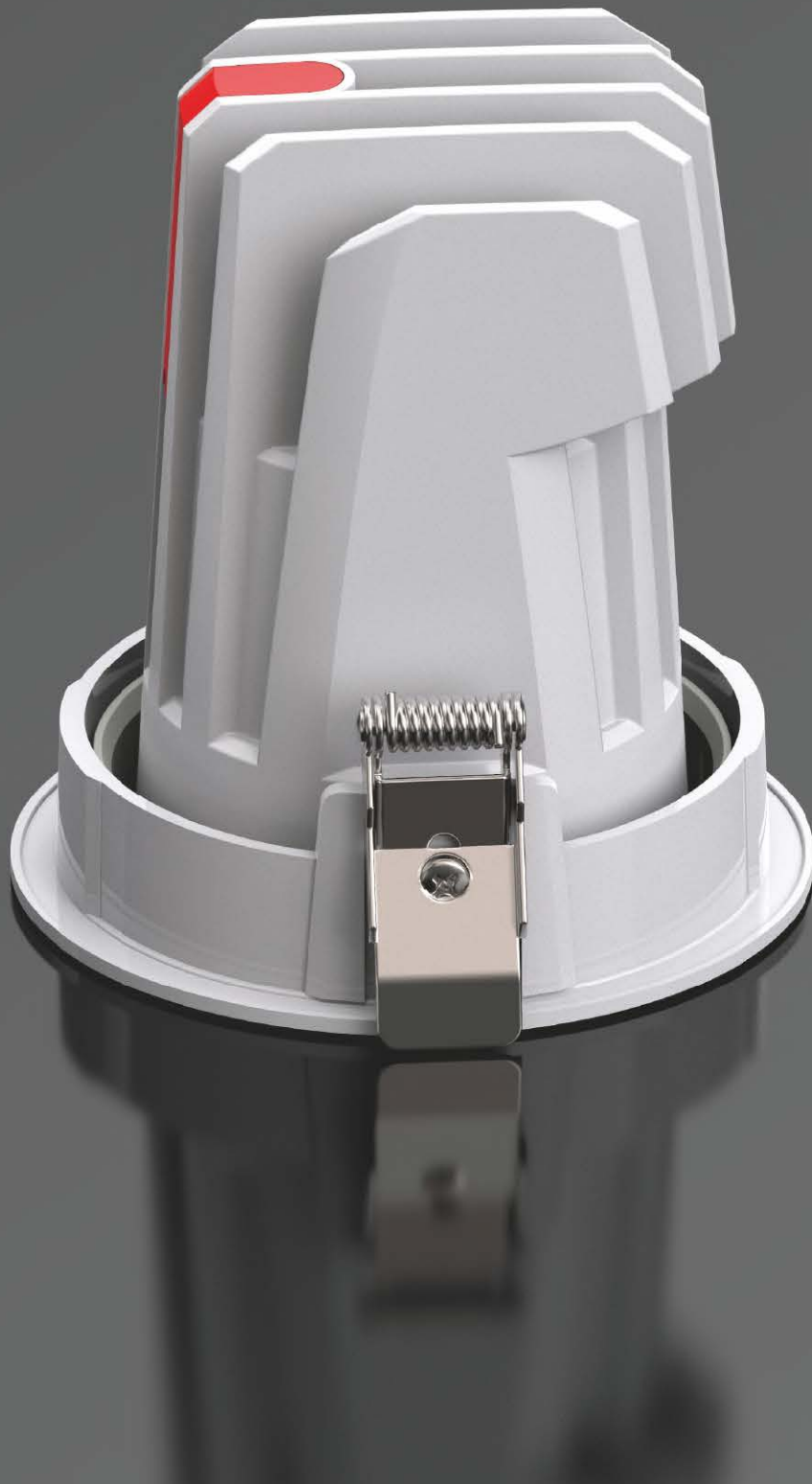
Product Breakdown Physical Diagram



# LIGHT

Light is everywhere

---





## PARAMETERS

MBT0031L



Model	Rated Power	Chip	CCT	CRI	Material	Dimension	Cutout	Input Voltage	Angle(Lens)
MBT0031L	9-12W	CREE/Bridgelux	3000K/4000K/6000K	>90	Aluminum	φ85*80mm	φ75mm	100-240V/50-60Hz	15°/24°/38°



## PARAMETERS

MBT0032L

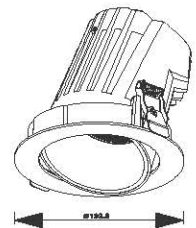


Model	Rated Power	Chip	CCT	CRI	Material	Dimension	Cutout	Input Voltage	Angle(Lens)
MBT0032L	15-20W	CREE/Bridgelux	3000K/4000K/6000K	>90	Aluminum	φ104*108mm	φ95mm	100-240V/50-60Hz	15°/24°/38°



## PARAMETERS

MBT0033L



Model	Rated Power	Chip	CCT	CRI	Material	Dimension	Cutout	Input Voltage	Angle(Lens)
MBT0033L	25-30W	CREE/Bridgelux	3000K/4000K/6000K	>90	Aluminum	φ132*127mm	φ125mm	100-240V/50-60Hz	15°/24°/38°

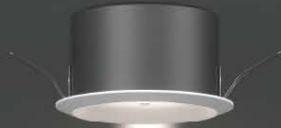
# DOWNLIGHT





DOWNLIGHT

BRIGHT



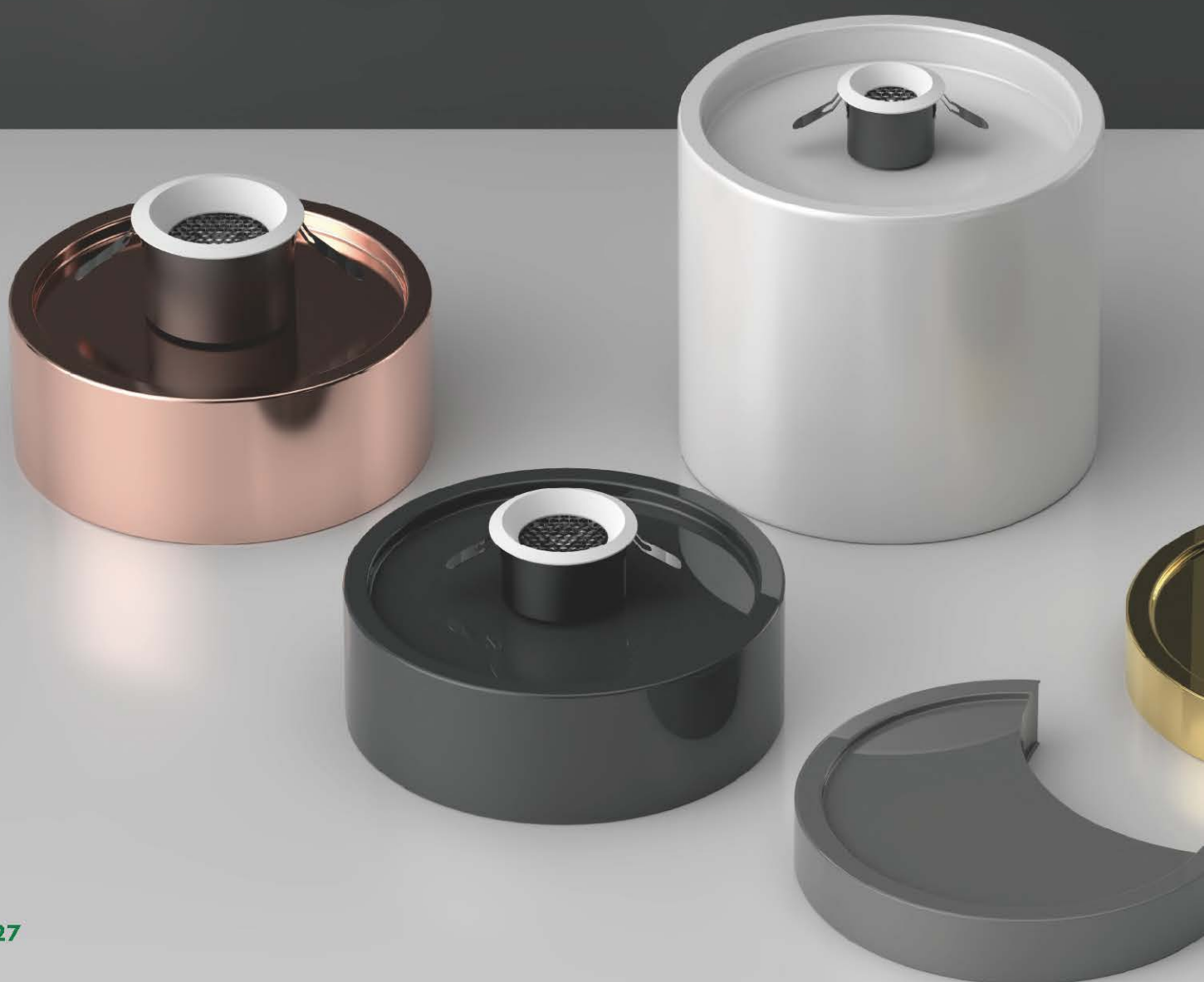
Project  
Distance



# THIN

Delicate, ultra-thin

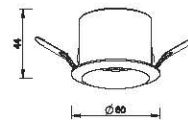
---





## PARAMETERS

STM5W

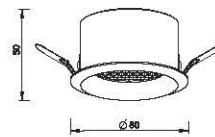


Model	Rated Power	Chip	CCT	CR	Material	Dimension	Cutout	Input Voltage	Angle(Lens)
STM5W	5W	CREE/Bridgelux	3000K/4000K/6000K	>90	Aluminum	φ60*44mm	φ55mm	100-240V/50-60Hz	15°/24°/38°/60°



## PARAMETERS

STM10W

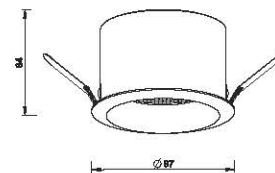


Model	Rated Power	Chip	CCT	CR	Material	Dimension	Cutout	Input Voltage	Angle(Lens)
STM10W	10W	CREE/Bridgelux	3000K/4000K/6000K	>90	Aluminum	φ80*50mm	φ75mm	100-240V/50-60Hz	15°/24°/38°/60°



## PARAMETERS

STM15W

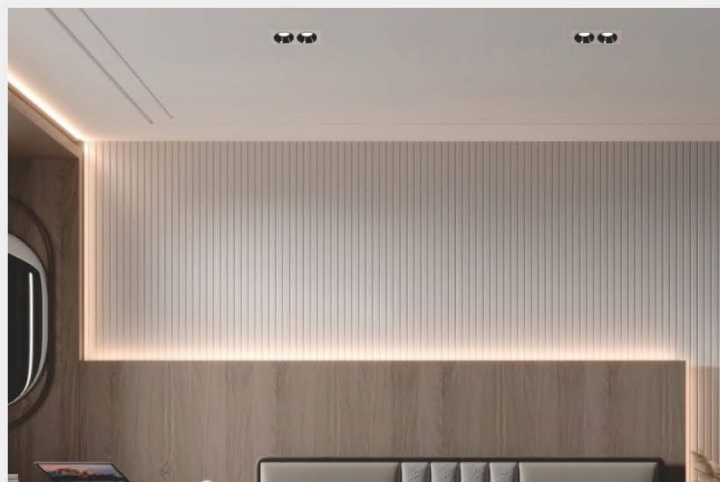


Model	Rated Power	Chip	CCT	CR	Material	Dimension	Cutout	Input Voltage	Angle(Lens)
STM15W	15W	CREE/Bridgelux	3000K/4000K/6000K	>90	Aluminum	φ97*64mm	φ90mm	100-240V/50-60Hz	15°/24°/38°/60°

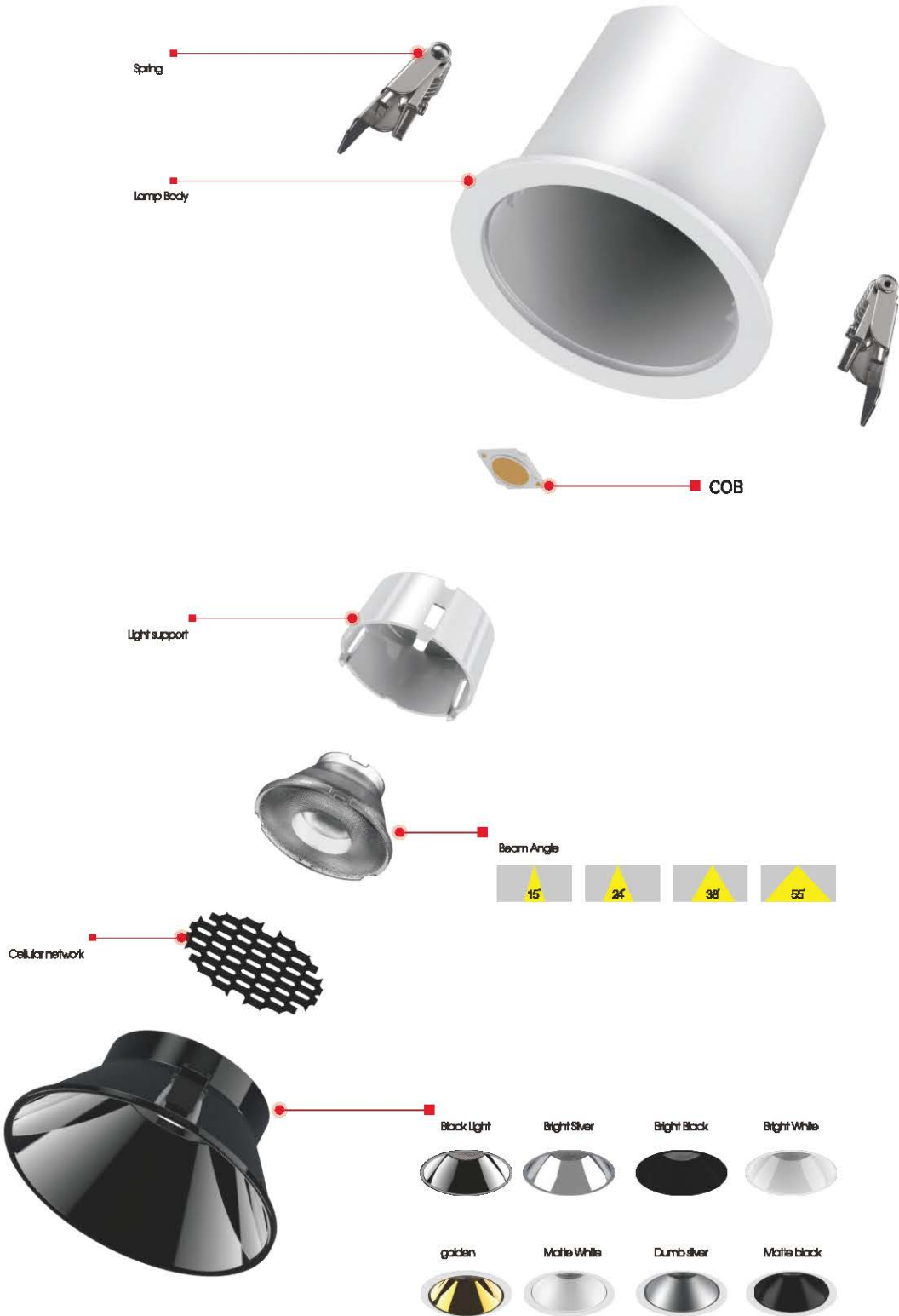


# DOWNLIGHT

DBL Series-COB Type



Product Breakdown Physical Diagram





# DOWNLIGHT

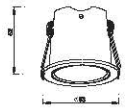
---





## PARAMETERS

DBL07-R

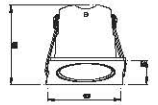


Model	Rated Power	Chip	CCT	CR	Material	Dimension	Cutout	Input Voltage	Angle(Lens)
DBL07-R	7W	CREE/Bridgelux	3000K/4000K/6000K	>90	Aluminum	φ63*52mm	φ55mm	100-240V/50-60Hz	15°/24°/36°/55°



## PARAMETERS

DBL07-S

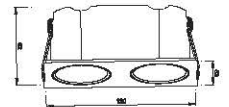


Model	Rated Power	Chip	CCT	CR	Material	Dimension	Cutout	Input Voltage	Angle(Lens)
DBL07-S	7W	CREE/Bridgelux	3000K/4000K/6000K	>90	Aluminum	63*63*52mm	55*55mm	100-240V/50-60Hz	15°/24°/36°/55°



## PARAMETERS

DBL07(BI)

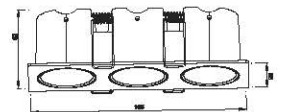


Model	Rated Power	Chip	CCT	CR	Material	Dimension	Cutout	Input Voltage	Angle(Lens)
DBL07(BI)	7*2W	CREE/Bridgelux	3000K/4000K/6000K	>90	Aluminum	130*63*52mm	120*55mm	100-240V/50-60Hz	15°/24°/36°/55°



## PARAMETERS

DBL07(TRI)

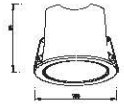


Model	Rated Power	Chip	CCT	CR	Material	Dimension	Cutout	Input Voltage	Angle(Lens)
DBL07(TRI)	7*3W	CREE/Bridgelux	3000K/4000K/6000K	>90	Aluminum	185*63*52mm	175*55mm	100-240V/50-60Hz	15°/24°/36°/55°



**PARAMETERS**

DBL10-R

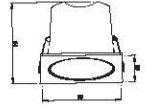


Model	Rated Power	Chip	CCT	CR	Material	Dimension	Cutout	Input Voltage	Angle(Lens)
DBL10-R	10W	CREE/Bridgelux	3000K/4000K/6000K	>90	Aluminum	φ86*64mm	φ75mm	100-240V/50-60Hz	15°/24°/38°/55°



**PARAMETERS**

DBL10-S

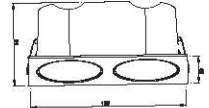


Model	Rated Power	Chip	CCT	CR	Material	Dimension	Cutout	Input Voltage	Angle(Lens)
DBL10-S	10W	CREE/Bridgelux	3000K/4000K/6000K	>90	Aluminum	85*85*64mm	75*75mm	100-240V/50-60Hz	15°/24°/38°/55°



**PARAMETERS**

GA-DBL10(BI)

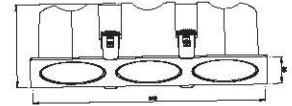


Model	Rated Power	Chip	CCT	CR	Material	Dimension	Cutout	Input Voltage	Angle(Lens)
DBL10(BI)	10*2W	CREE/Bridgelux	3000K/4000K/6000K	>90	Aluminum	165*85*64mm	150*75mm	100-240V/50-60Hz	15°/24°/38°/55°



**PARAMETERS**

DBL10(TRI)



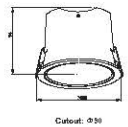
Model	Rated Power	Chip	CCT	CR	Material	Dimension	Cutout	Input Voltage	Angle(Lens)
DBL10(TRI)	10*3W	CREE/Bridgelux	3000K/4000K/6000K	>90	Aluminum	230*85*64mm	230*75mm	100-240V/50-60Hz	15°/24°/38°/55°





## PARAMETERS

DBL15-R

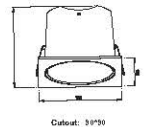


Model	Rated Power	Chip	CCT	CRI	Material	Dimension	Cutout	Input Voltage	Angle(Lens)
DBL15-R	15W	CREE/Bridgelux	3000K/4000K/6000K	>90	Aluminum	$\varnothing 102 \times 74 \text{mm}$	$\varnothing 90 \text{mm}$	100-240V/50-60Hz	15°/24°/38°/55°



## PARAMETERS

DBL15-S

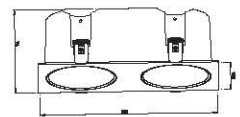


Model	Rated Power	Chip	CCT	CRI	Material	Dimension	Cutout	Input Voltage	Angle(Lens)
DBL15-S	15W	CREE/Bridgelux	3000K/4000K/6000K	>90	Aluminum	$102 \times 102 \times 74 \text{mm}$	90*90mm	100-240V/50-60Hz	15°/24°/38°/55°

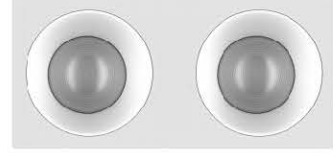
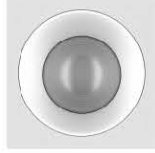


## PARAMETERS

DBL15(BI)



Model	Rated Power	Chip	CCT	CRI	Material	Dimension	Cutout	Input Voltage	Angle(Lens)
DBL15(BI)	15*2W	CREE/Bridgelux	3000K/4000K/6000K	>90	Aluminum	$220 \times 102 \times 74 \text{mm}$	205*90mm	100-240V/50-60Hz	15°/24°/38°/55°



# DOWNLIGHT

DBL Sereis-SMD Type





Product Breakdown Physical Diagram



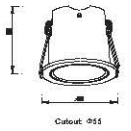
DOWNLIGHT





## PARAMETERS

DBL07-R



Model	Rated Power	Chip	CCT	CRl	Material	Dimension	Cutout	Input Voltage	Angle(Lens)
DBL07-R	7W	Bridgelux/Epistar SMD2835	3000K/4000K/6000K	>90	Aluminum	Φ 63*52mm	Φ55mm	100-240V/50-60Hz	60°



## PARAMETERS

DBL07-S

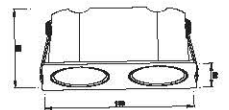


Model	Rated Power	Chip	CCT	CRl	Material	Dimension	Cutout	Input Voltage	Angle(Lens)
DBL07-S	7W	Bridgelux/Epistar SMD2835	3000K/4000K/6000K	>90	Aluminum	63*63*52mm	55*55mm	100-240V/50-60Hz	60°



## PARAMETERS

DBL07(BI)

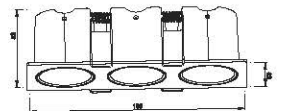


Model	Rated Power	Chip	CCT	CRl	Material	Dimension	Cutout	Input Voltage	Angle(Lens)
DBL07(BI)	7W*2	Bridgelux/Epistar SMD2835	3000K/4000K/6000K	>90	Aluminum	130*63*52mm	120*55mm	100-240V/50-60Hz	60°



## PARAMETERS

DBL07(TRI)

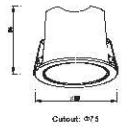


Model	Rated Power	Chip	CCT	CRl	Material	Dimension	Cutout	Input Voltage	Angle(Lens)
DBL07(TRI)	7W*3	Bridgelux/Epistar SMD2835	3000K/4000K/6000K	>90	Aluminum	185*63*52mm	175*55mm	100-240V/50-60Hz	60°



**PARAMETERS**

DBL10-R

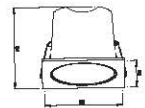


Model	Rated Power	Chip	CCT	CR	Material	Dimension	Cutout	Input Voltage	Angle(Lens)
DBL10-R	10W	Bridgelux/Epistar SMD2835	3000K/4000K/6000K	>90	Aluminum	Φ85*64mm	Φ 75mm	100-240V/50-60Hz	60°



**PARAMETERS**

DBL10-S

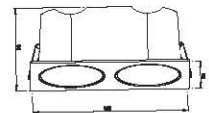


Model	Rated Power	Chip	CCT	CR	Material	Dimension	Cutout	Input Voltage	Angle(Lens)
DBL10-S	10W	Bridgelux/Epistar SMD2835	3000K/4000K/6000K	>90	Aluminum	85*85*64mm	75*75mm	100-240V/50-60Hz	60°



**PARAMETERS**

DBL10(BI)

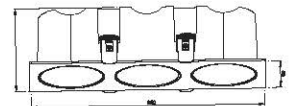


Model	Rated Power	Chip	CCT	CR	Material	Dimension	Cutout	Input Voltage	Angle(Lens)
DBL10(BI)	10W*2	Bridgelux/Epistar SMD2835	3000K/4000K/6000K	>90	Aluminum	165*85*64mm	150*75mm	100-240V/50-60Hz	60°



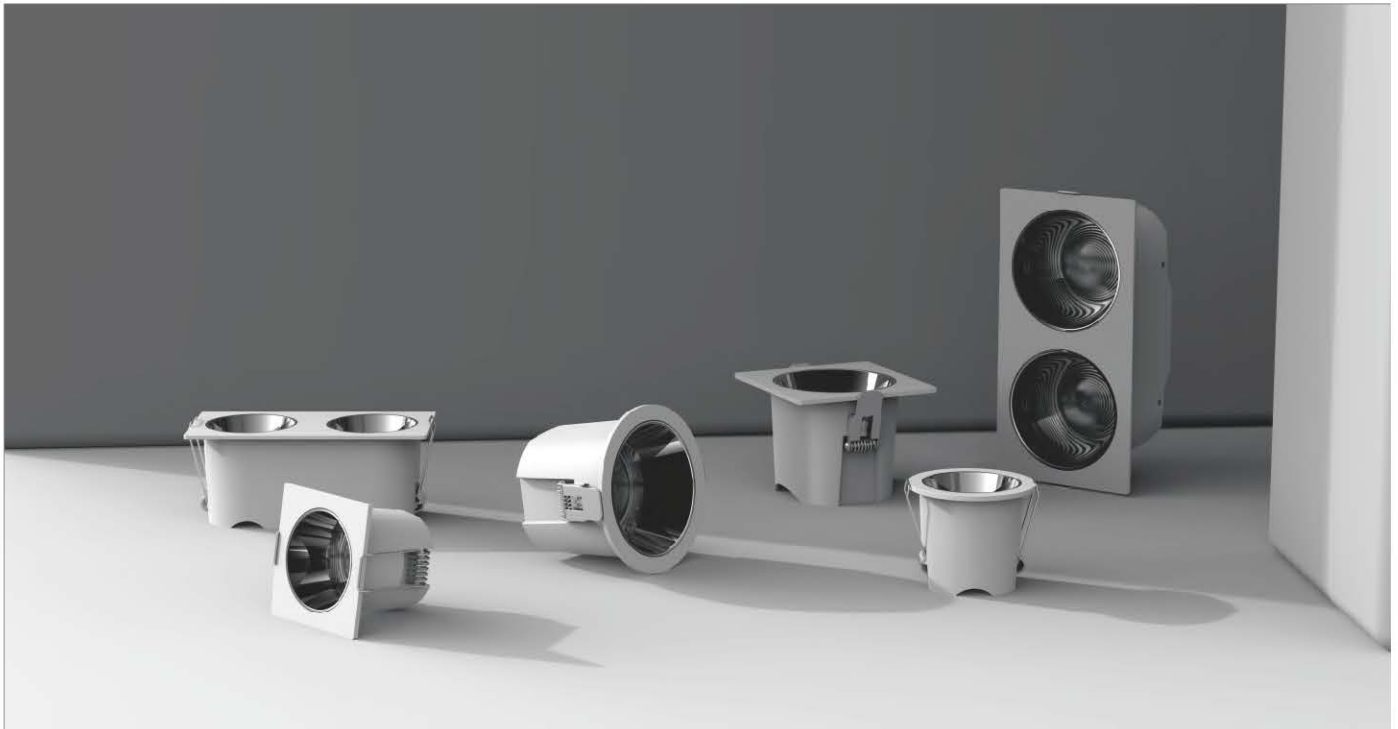
**PARAMETERS**

DBL10(TRI)



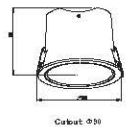
Model	Rated Power	Chip	CCT	CR	Material	Dimension	Cutout	Input Voltage	Angle(Lens)
DBL10(TRI)	10W*3	Bridgelux/Epistar SMD2835	3000K/4000K/6000K	>90	Aluminum	240*85*64mm	230*75mm	100-240V/50-60Hz	60°





## PARAMETERS

DBL15-R

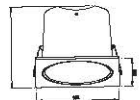


Model	Rated Power	Chip	CCT	CRI	Material	Dimension	Cutout	Input Voltage	Angle(Lens)
DBL15-R	15W	Bridgelux/Epistar SMD2835	3000K/4000K/6000K	>90	Aluminum	Φ102mm	Φ90mm	100-240V/50-60Hz	60°



## PARAMETERS

DBL15-S

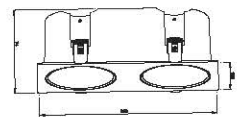


Model	Rated Power	Chip	CCT	CRI	Material	Dimension	Cutout	Input Voltage	Angle(Lens)
DBL15-S	15W	Bridgelux/Epistar SMD2835	3000K/4000K/6000K	>90	Aluminum	102*102*74mm	90*90mm	100-240V/50-60Hz	60°



## PARAMETERS

DBL15(BI)

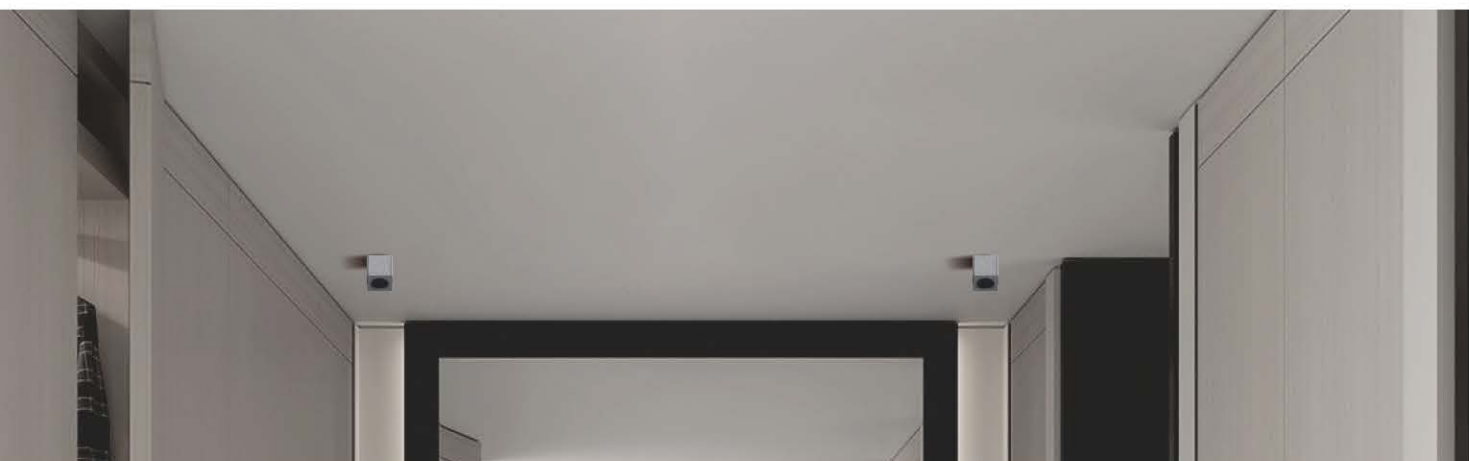


Model	Rated Power	Chip	CCT	CRI	Material	Dimension	Cutout	Input Voltage	Angle(Lens)
DBL15(BI)	15W*2	Bridgelux/Epistar SMD2835	3000K/4000K/6000K	>90	Aluminum	220*102*74mm	205*90mm	100-240V/50-60Hz	60°



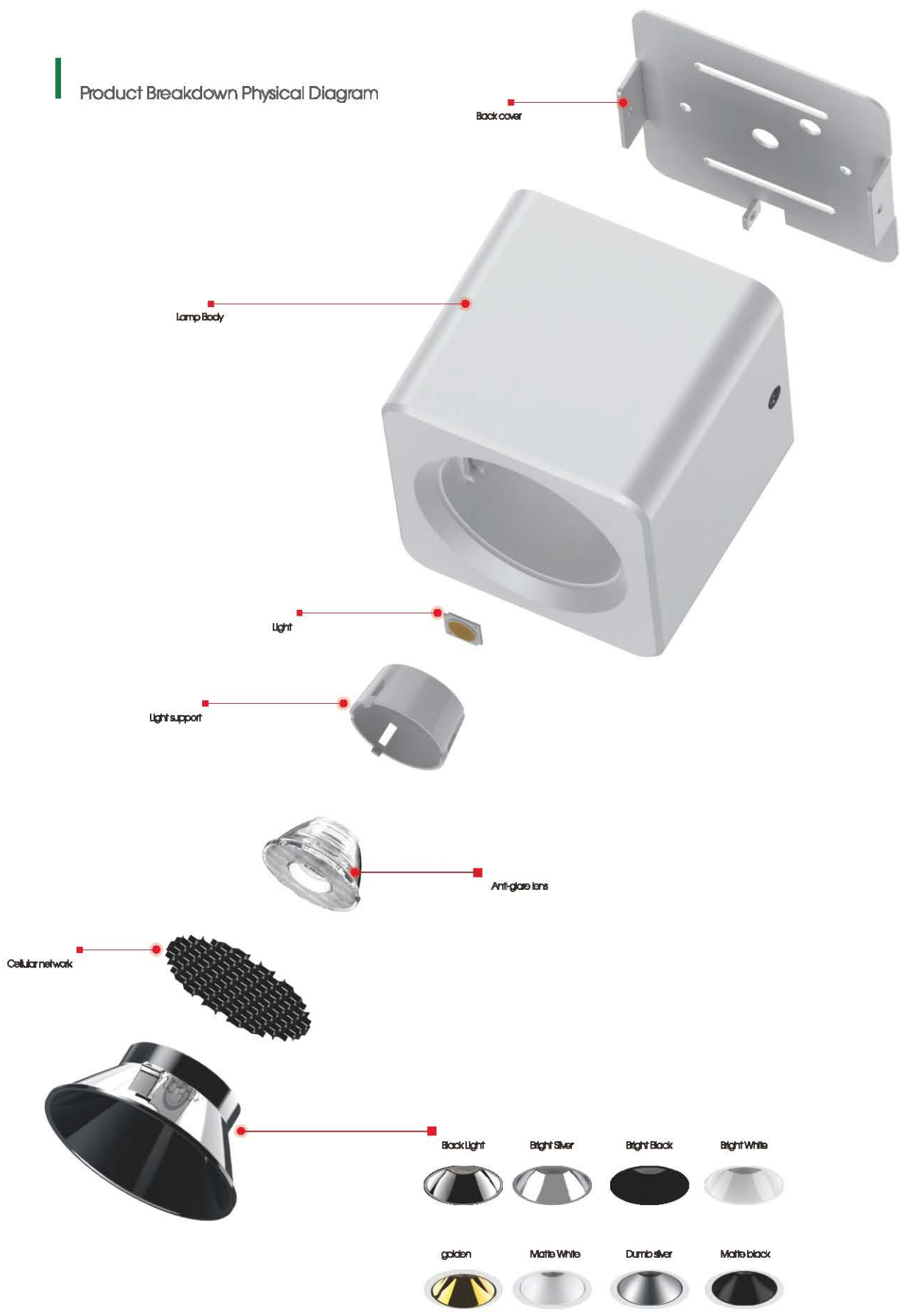
# DOWNLIGHT

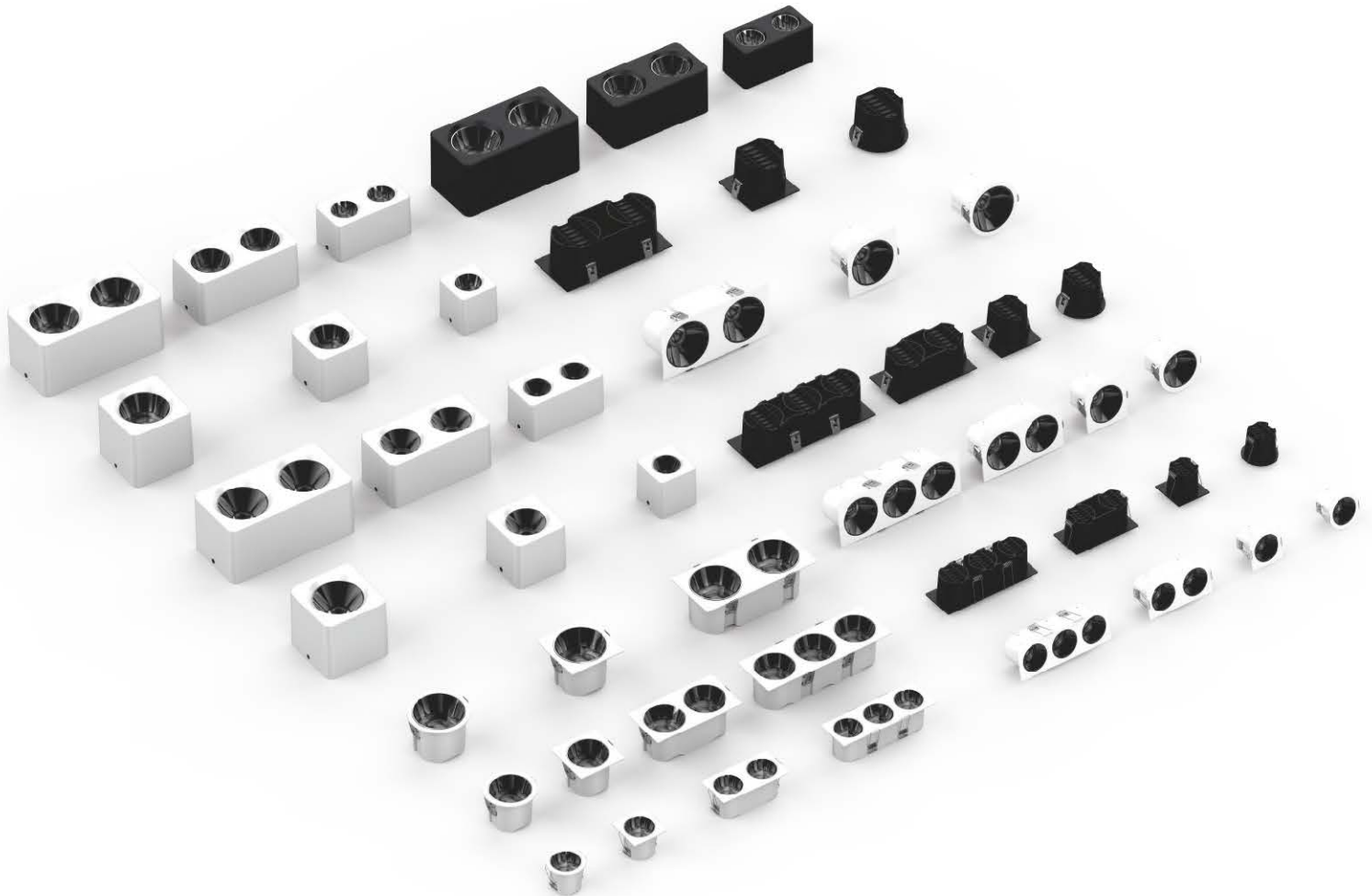
DBM Series-COB Type





Product Breakdown Physical Diagram





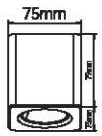
## DOWNLIGHT

---



## PARAMETERS

DBM07

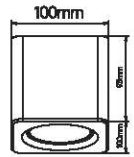


Model	Rated Power	Chip	CCT	CRI	Material	Dimension	Input Voltage	Angle(Lens)
DBM07	7W	Bridgelux/Epistar	3000K/4000K/6000K	>90	Aluminum	75*75*93mm	100-240V/50-60Hz	15°/24°/36°/55°



## PARAMETERS

DBM10

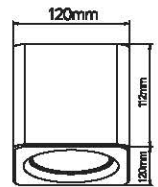


Model	Rated Power	Chip	CCT	CRI	Material	Dimension	Input Voltage	Angle(Lens)
DBM10	10W	Bridgelux/Epistar	3000K/4000K/6000K	>90	Aluminum	100*100*93mm	100-240V/50-60Hz	15°/24°/36°/55°



## PARAMETERS

DBM15

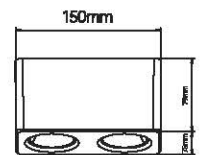


Model	Rated Power	Chip	CCT	CRI	Material	Dimension	Input Voltage	Angle(Lens)
DBM15	15W	Bridgelux/Epistar	3000K/4000K/6000K	>90	Aluminum	120*120*112mm	100-240V/50-60Hz	15°/24°/36°/55°



## PARAMETERS

DBM07(BI)

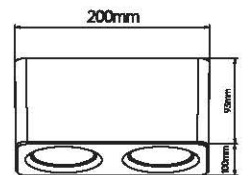


Model	Rated Power	Chip	CCT	CRI	Material	Dimension	Input Voltage	Angle(Lens)
DBM07(BI)	7W*2	Bridgelux/Epistar	3000K/4000K/6000K	>90	Aluminum	75*150*79mm	100-240V/50-60Hz	15°/24°/36°/55°



## PARAMETERS

DBM10(BI)

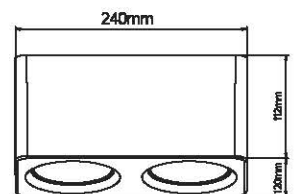


Model	Rated Power	Chip	CCT	CRI	Material	Dimension	Input Voltage	Angle(Lens)
DBM10(BI)	10W*2	Bridgelux/Epistar	3000K/4000K/6000K	>90	Aluminum	120*200*83mm	100-240V/50-60Hz	15°/24°/36°/55°



## PARAMETERS

DBM15(BI)



Model	Rated Power	Chip	CCT	CRI	Material	Dimension	Input Voltage	Angle(Lens)
DBM15(BI)	15W*2	Bridgelux/Epistar	3000K/4000K/6000K	>90	Aluminum	120*240*112mm	100-240V/50-60Hz	15°/24°/36°/55°



# DOWNLIGHT

DBM Series-SMD Type



Product Breakdown Physical Diagram



# DOWNLIGHT

---

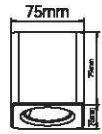






## PARAMETERS

DBM07

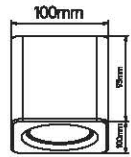


Model	Rated Power	Chip	CCT	CRI	Material	Dimension	Input Voltage	Angle(Lens)
DBM07	7W	Bridgelux/Epistar SMD2835	3000K/4000K/6000K	>90	Aluminum	75*75*79mm	100-240V/50-60Hz	60°



## PARAMETERS

DBM10

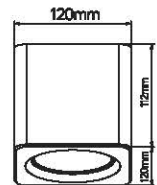


Model	Rated Power	Chip	CCT	CRI	Material	Dimension	Input Voltage	Angle(Lens)
DBM10	10W	Bridgelux/Epistar SMD2835	3000K/4000K/6000K	>90	Aluminum	100*100*93mm	100-240V/50-60Hz	60°



## PARAMETERS

DBM15

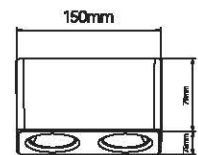


Model	Rated Power	Chip	CCT	CRI	Material	Dimension	Input Voltage	Angle(Lens)
GA-DBM15	15W	Bridgelux/Epistar SMD2835	3000K/4000K/6000K	>90	Aluminum	120*240*112mm	100-240V/50-60Hz	60°



## PARAMETERS

DBM07(BI)

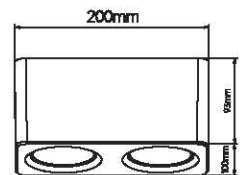


Model	Rated Power	Chip	CCT	CRI	Material	Dimension	Input Voltage	Angle(Lens)
DBM07(BI)	7W*2	Bridgelux/Epistar SMD2835	3000K/4000K/6000K	>90	Aluminum	75*150*79mm	100-240V/50-60Hz	60°



## PARAMETERS

DBM10(BI)

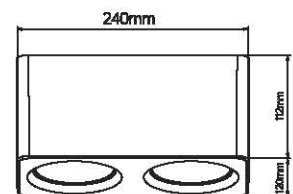


Model	Rated Power	Chip	CCT	CRI	Material	Dimension	Input Voltage	Angle(Lens)
DBM10(BI)	10W*2	Bridgelux/Epistar SMD2835	3000K/4000K/6000K	>90	Aluminum	100*200*93mm	100-240V/50-60Hz	60°



## PARAMETERS

DBM15(BI)



Model	Rated Power	Chip	CCT	CRI	Material	Dimension	Input Voltage	Angle(Lens)
DBM15(BI)	15W*2	Bridgelux/Epistar SMD2835	3000K/4000K/6000K	>90	Aluminum	120*240*112mm	100-240V/50-60Hz	60°



☎ Phone : +370-600-93111

✉ E-mail : [info@ledesta.eu](mailto:info@ledesta.eu)

[www.ledesta.eu](http://www.ledesta.eu)